



 PennState

LiveOn

liveon.psu.edu

This webinar is for current Penn State students to learn about the LiveOn Housing Process for the 2025-2026 academic year.

Housing Decision Factors

How do I decide where to live next year???

 **BUDGET**

 **FLEXIBILITY**

 **MEALS**

 **AMENITIES**

 **SUPPORT**

 **CONVENIENCE**

 **RESPONSIBILITY**

housing.psu.edu

On-Campus Housing



Housing Accommodations

approved determination will be used when room assignment is processed



Gender Inclusive Housing / Open Housing



Break Access/Holiday Housing

available in select housing options



Living Learning Communities (LLCs)



Roommate Requests

Students **do not need** to have a roommate to participate in LiveOn Housing Process

Friend groups (2-4) can be accommodated through LiveOn Housing process for same housing option



Greek Life at Penn State

Primary recruitment for sororities and fraternities occurs in spring semester.

Students are advised to not make any housing arrangements until the conclusion of recruitment.



Room and Board Rates

2025-2026 rates approved

liveon.psu.edu/university-park/rates



Campus Meal Plan

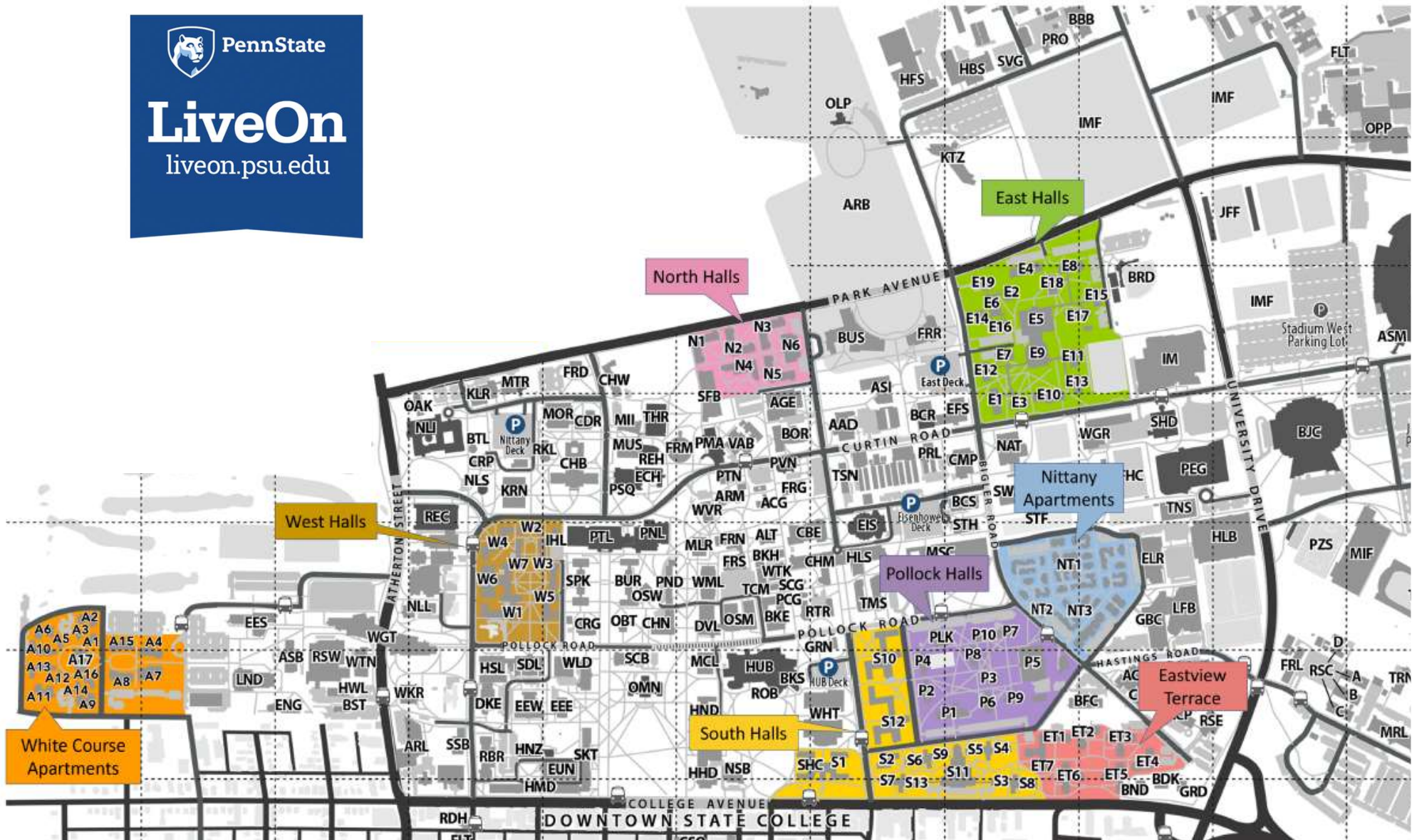
Required purchase for fall & spring

Optional for Nittany & White Course Apts


Campus Meal Plan

- Required purchase, except for Nittany and White Course Apartment residents
- Declining Account Balance
- Accessed through id+ Card
- One meal plan, 3 different levels – HFS Contract defaults to level 2
- Flexibility & Convenience
- LionCash backup

Level	Dining dollars		Base Cost		TOTAL <i>per semester</i>
1	\$947	+	\$1710	=	\$2657
2	\$1191	+	\$1710	=	\$2901
3	\$1414	+	\$1710	=	\$3124



On-Campus Housing Options



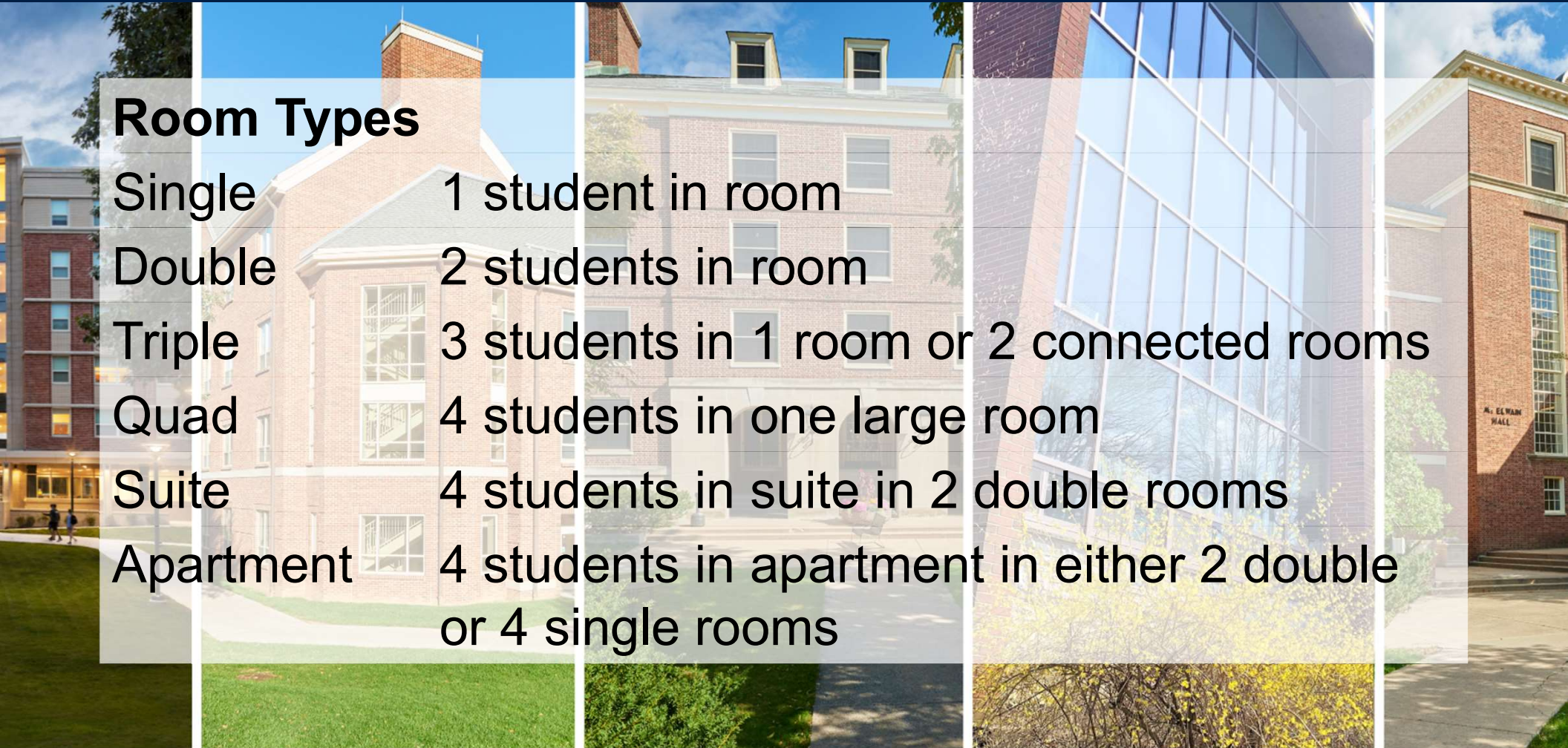
Traditional Residence Halls
Renovated Residence Halls
Eastview Terrace
Nittany and North Suites
Nittany Apartments
White Course Apartments
Supplemental Housing

Smoke-free, alcohol-free living environment

On-Campus Housing Options

Room Types

Single	1 student in room
Double	2 students in room
Triple	3 students in 1 room or 2 connected rooms
Quad	4 students in one large room
Suite	4 students in suite in 2 double rooms
Apartment	4 students in apartment in either 2 double or 4 single rooms



Traditional Residence Halls



- Housing Areas:
 - Pollock (**Beaver**)
 - South (Atherton*, McElwain^, **Simmons**^)
 - West (**Hamilton**^, Irvin, Jordan*, Thompson, Watts)
- Room Types: single-, double-, triple, and quad-occupancy
- Bathrooms
 - Communal
 - *Individual/private-use
 - ^Both communal and private-use
- Laundry: in building
- Campus Meal Plan is required

2025-2026 Room Rate <i>(per person, per semester)</i>	
Room Description	Rate
Single-occupancy	\$5246
Double-occupancy	\$4039
Triple-occupancy	\$3638
Quad-occupancy	\$3638
Break Access/Holiday Housing	+ \$510









Renovated Residence Halls



- Housing Area: South
Chace, Cooper, Cross, Ewing, Haller, Hibbs, Hoyt, Stephens, Lyons
- Room Type: Double-occupancy
- Bathrooms: individual/private-use
- Access to a building suite with living room and kitchenette
- Climate Controlled Environment
- Laundry: in building
- Campus Meal Plan is required
- Sorority Housing

2025-2026 Room Rate *(per person, per semester)*

Room Description	Rate
Double-occupancy	\$4638
Supplemental	\$3710





Eastview Terrace



- Housing Area: South
Brill, Curry, Harris, Miller, Nelson, Panofsky, **Young**
- Room Types:
 - Single-occupancy
 - **Double-occupancy** *New Option!*
- Includes private in-room bathroom, controllable air conditioning
- Laundry: located in each pod area washer and dryer cycles are free
- Campus Meal Plan is required

2025-2026 Room Rate <i>(per person, per semester)</i>	
Room Description	Rate
Eastview single	\$6283
Eastview double	\$5101
Break Access/Holiday Housing	+ \$510





Suites

- Housing Area: Pollock (Nittany Hall)
- Room Type: 2-bedroom, 4-person suite
- Includes in-room bathroom, controllable air conditioning
- Laundry: in Nittany Community Center
- Campus Meal Plan is required

2025-2026 Room Rate *(per person, per semester)*

Room Description	Rate
Nittany Hall Suite 2-bedroom, 4-person	\$4778



Suites

- Housing Area: North
Beam, Holmes, Leete, Runkle Halls
- Room Types:
 - 2-bedroom, 4-person suite
 - 2-bedroom, 2-person suite (limited)
 - Supplemental housing suite
- Includes in-room bathroom, controllable air conditioning
- Laundry: in building
- Campus Meal Plan is required

2025-2026 Room Rate *(per person, per semester)*

Room Description	Rate
North Suite 2-bedroom, 4-person	\$5180
North Suite 2-bedroom, 2-person	\$6283
North Suite supplemental housing	\$4144



HOLMES
HALL







Nittany Apartments



- Housing Area: Pollock
- 4-person apartment types:
 - 2 double-occupancy bedrooms garden
 - 4 single-occupancy bedrooms townhouse
 - 4 single-occupancy bedrooms garden
 - Twin-size & full-size beds
- Includes bathroom(s), living room, & kitchen; controllable air conditioning
- Laundry: Community Center
- Campus Meal Plan is optional

2025-2026 Room Rate *(per person, per semester)*

Room Description	Rate
2-bedroom, 4-person garden	\$4905
4-bedroom, 4-person garden	\$5499
4-bedroom, 4-person townhouse	\$5715
Break Access/Holiday Housing	+ \$510



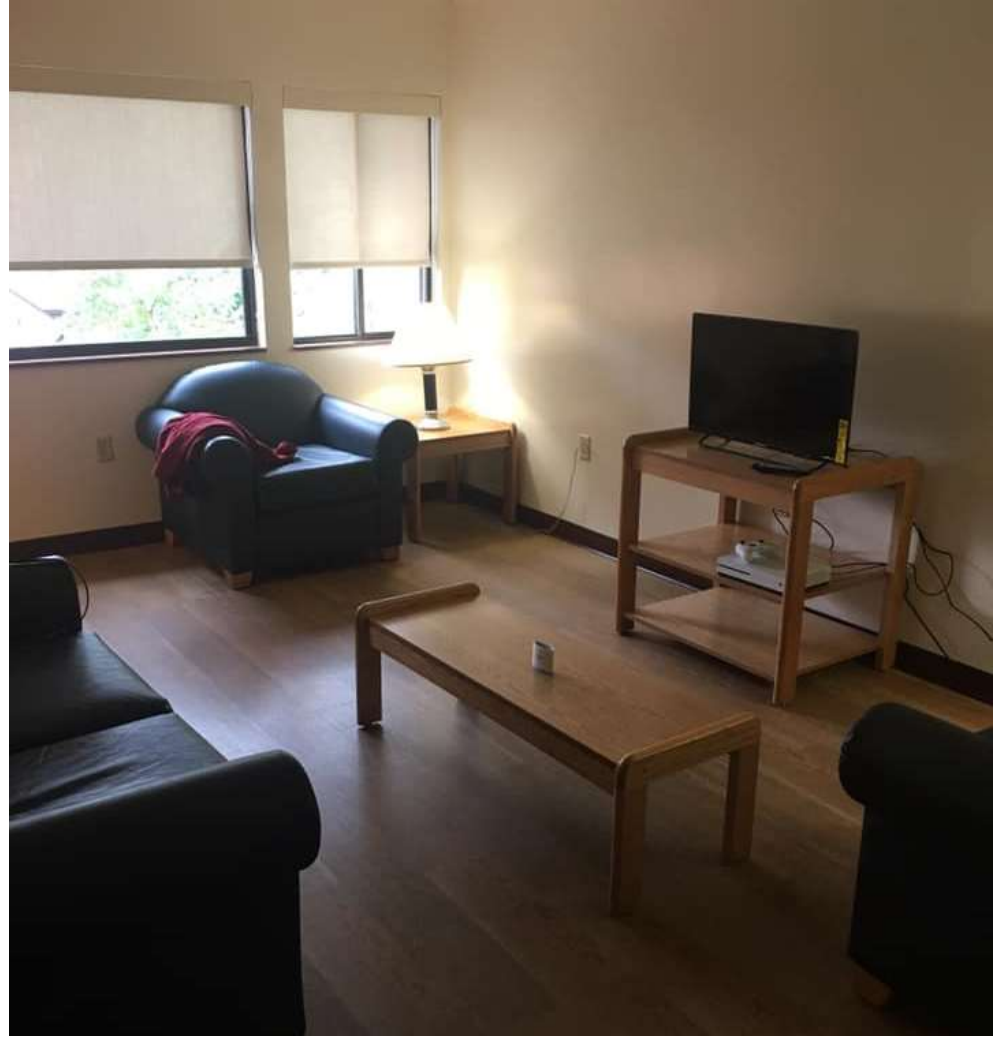












White Course Apartments



- Housing Area: White Course
Dunham, Garban, Grubb Halls
- 4-bedroom, 4-person apartments
- Includes 2 bathrooms, living room, & kitchen; controllable air conditioning
- Laundry: in apartment; washer and dryer cycles are free
- Campus Meal Plan is optional

2025-2026 Room Rate <i>(per person, per semester)</i>	
Room Description	Rate
4-bedroom, 4-person	\$5751
Break Access/Holiday Housing	+ \$510



GRUBB
HALL





Supplemental Housing



- “Overflow” housing located in residence halls
- Large rooms permanently converted to living space
- Spaces range from 4, 6, to 8 roommates
- Some rooms offer in-room bathroom
- Offers similar amenities for each student
- Discounted room rate
- On-campus meal plan required



1. Housing option Selection
2. Contract Transfer of Obligation
3. On-Campus Housing Waitlist

2025-2026 Room Rate *(per person, per semester)*

Room Description	Rate
Traditional (4-6 or 6-8 students)	\$3231
Renovated (6 students)	\$3710
Suite with bathroom (6 students)	\$4144

liveon.psu.edu/university-park/supplemental-housing